

# archexteriors

2016



Have you ever wanted to make professional exterior renderings? Do you know how to use V-RaySun, V-RaySky and V-RayPhysicalCamera? Have you ever had problems with composition? Archexteriors will end all your problems. Take a look at this 10 fully textured scenes with professional shaders and lighting ready to render. Get your own portfolio and join cg market.



scene 01 cam 01 post production



# archexteriors

2016



Have you ever wanted to make professional exterior renderings? Do you know how to use V-RaySun, V-RaySky and V-RayPhysicalCamera? Have you ever had problems with composition? Archexteriors will end all your problems. Take a look at this 10 fully textured scenes with professional shaders and lighting ready to render. Get your own portfolio and join cg market.



scene 01 cam 01 raw



scene 01 cam 01 wire

Software and models © 2016 EVERMOTION. EVERMOTION logo is trademark or registered trademark of Evermotion Inc. in the U.S. and/or other countries. All rights reserved. All \*.max and bitmaps models included on this collection with data are an integral part of „archexteriors vol.30” and the resale of this data is strictly prohibited. All models can be used for commercial purposes only by owners who bought this collection. The sharing of collection is strictly prohibited unless that user has written authorization from EVERMOTION.



# archexteriors

2016



Have you ever wanted to make professional exterior renderings? Do you know how to use V-RaySun, V-RaySky and V-RayPhysicalCamera? Have you ever had problems with composition? Archexteriors will end all your problems. Take a look at this 10 fully textured scenes with professional shaders and lighting ready to render. Get your own portfolio and join cg market.



scene 01 cam 02 post production



# archexteriors

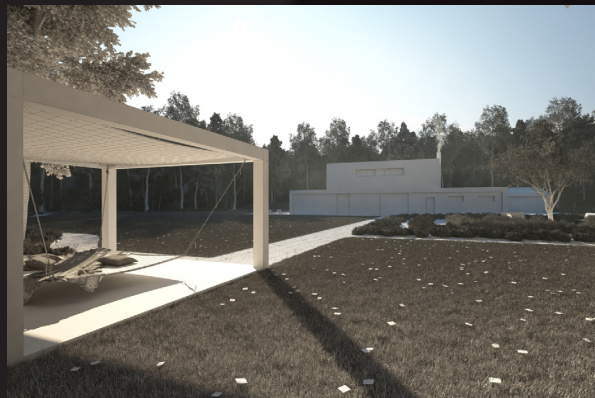
2016



Have you ever wanted to make professional exterior renderings? Do you know how to use V-RaySun, V-RaySky and V-RayPhysicalCamera? Have you ever had problems with composition? Archexteriors will end all your problems. Take a look at this 10 fully textured scenes with professional shaders and lighting ready to render. Get your own portfolio and join cg market.



scene 01 cam 02 raw



scene 01 cam 02 wire

Software and models © 2016 EVERMOTION. EVERMOTION logo is trademark or registered trademark of Evermotion Inc. in the U.S. and/or other countries. All rights reserved. All \*.max and bitmaps models included on this collection with data are an integral part of „archexteriors vol.30” and the resale of this data is strictly prohibited. All models can be used for commercial purposes only by owners who bought this collection. The sharing of collection is strictly prohibited unless that user has written authorization from EVERMOTION.



# archexteriors

2016



Have you ever wanted to make professional exterior renderings? Do you know how to use V-RaySun, V-RaySky and V-RayPhysicalCamera? Have you ever had problems with composition? Archexteriors will end all your problems. Take a look at this 10 fully textured scenes with professional shaders and lighting ready to render. Get your own portfolio and join cg market.



scene 01 cam 03 post production

Software and models © 2016 EVERMOTION. EVERMOTION logo is trademark or registered trademark of Evermotion Inc. in the U.S. and/or other countries. All rights reserved. All \*.max and bitmaps models included on this collection with data are an integral part of „archexteriors vol.30” and the resale of this data is strictly prohibited. All models can be used for commercial purposes only by owners who bought this collection. The sharing of collection is strictly prohibited unless that user has written authorization from EVERMOTION.



# archexteriors

2016



Have you ever wanted to make professional exterior renderings? Do you know how to use V-RaySun, V-RaySky and V-RayPhysicalCamera? Have you ever had problems with composition? Archexteriors will end all your problems. Take a look at this 10 fully textured scenes with professional shaders and lighting ready to render. Get your own portfolio and join cg market.



scene 01 cam 03 raw



scene 01 cam 03 wire

Software and models © 2016 EVERMOTION. EVERMOTION logo is trademark or registered trademark of Evermotion Inc. in the U.S. and/or other countries. All rights reserved. All \*.max and bitmaps models included on this collection with data are an integral part of „archexteriors vol.30” and the resale of this data is strictly prohibited. All models can be used for commercial purposes only by owners who bought this collection. The sharing of collection is strictly prohibited unless that user has written authorization from EVERMOTION.

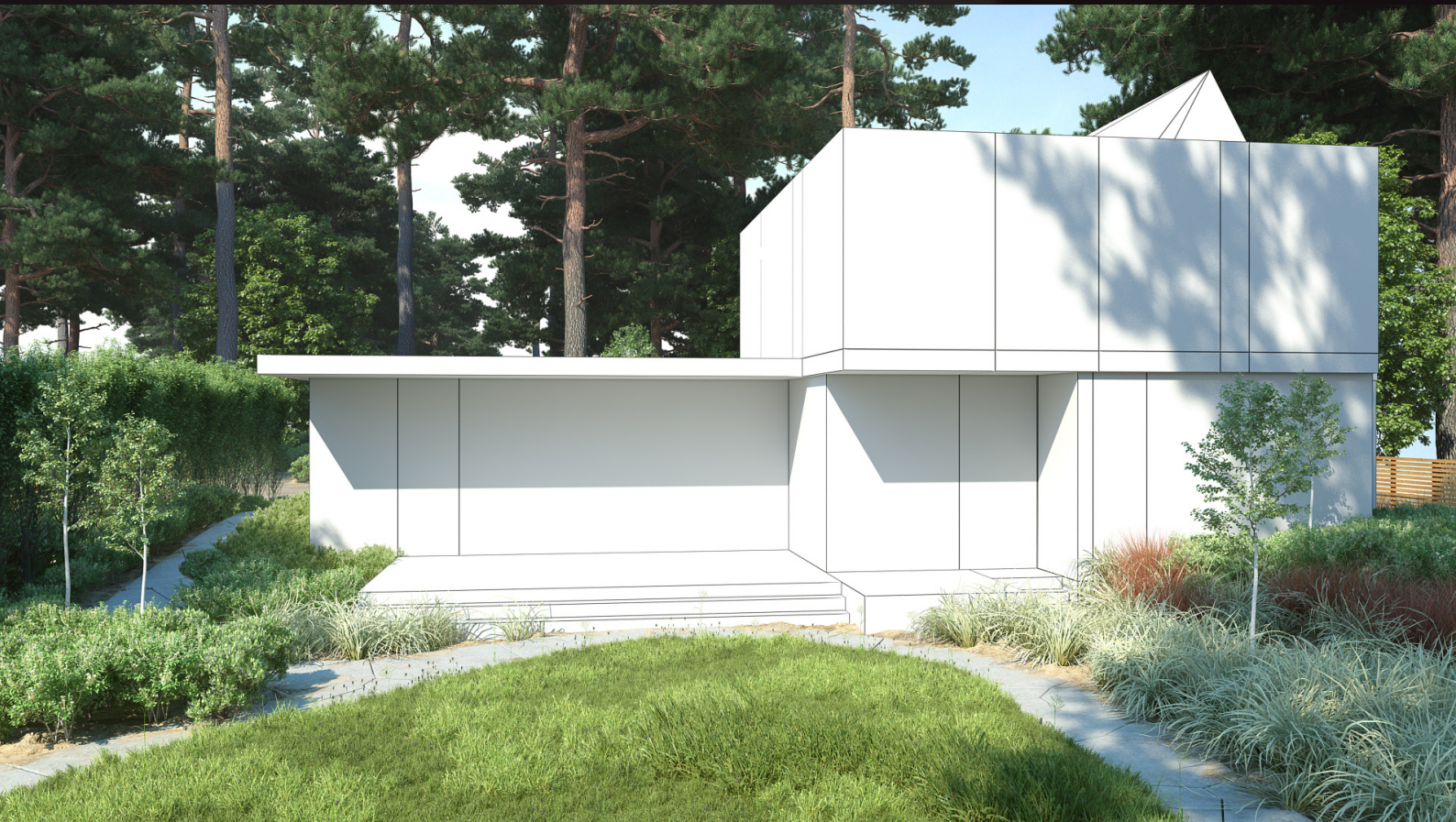


# archexteriors

2016



Have you ever wanted to make professional exterior renderings? Do you know how to use V-RaySun, V-RaySky and V-RayPhysicalCamera? Have you ever had problems with composition? Archexteriors will end all your problems. Take a look at this 10 fully textured scenes with professional shaders and lighting ready to render. Get your own portfolio and join cg market.



scene 02 cam 01 post production

Software and models © 2016 EVERMOTION. EVERMOTION logo is trademark or registered trademark of Evermotion Inc. in the U.S. and/or other countries. All rights reserved. All \*.max and bitmaps models included on this collection with data are an integral part of „archexteriors vol.30” and the resale of this data is strictly prohibited. All models can be used for commercial purposes only by owners who bought this collection. The sharing of collection is strictly prohibited unless that user has written authorization from EVERMOTION.



# archexteriors

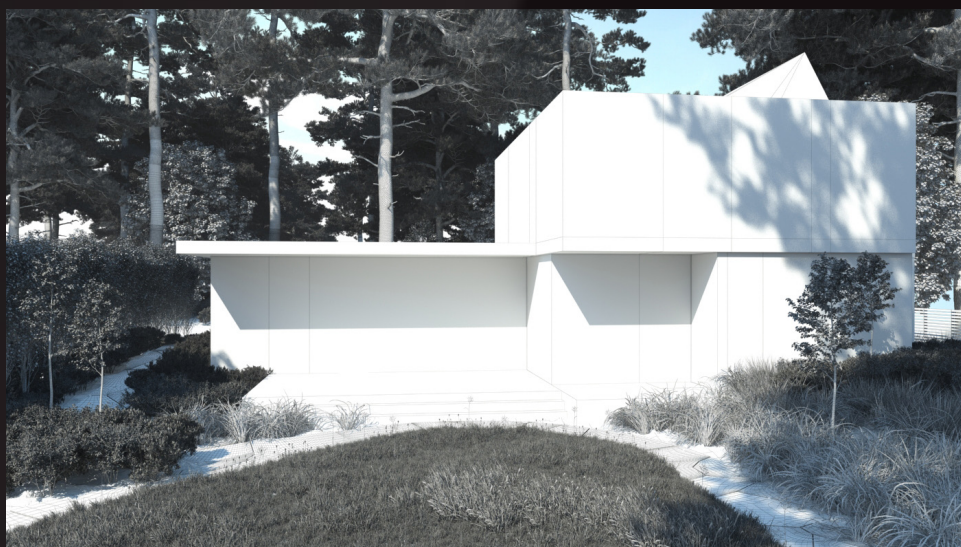
2016



Have you ever wanted to make professional exterior renderings? Do you know how to use V-RaySun, V-RaySky and V-RayPhysicalCamera? Have you ever had problems with composition? Archexteriors will end all your problems. Take a look at this 10 fully textured scenes with professional shaders and lighting ready to render. Get your own portfolio and join cg market.



scene 02 cam 01 raw



scene 02 cam 01 wire

Software and models © 2016 EVERMOTION. EVERMOTION logo is trademark or registered trademark of Evermotion Inc. in the U.S. and/or other countries. All rights reserved. All \*.max and bitmaps models included on this collection with data are an integral part of „archexteriors vol.30” and the resale of this data is strictly prohibited. All models can be used for commercial purposes only by owners who bought this collection. The sharing of collection is strictly prohibited unless that user has written authorization from EVERMOTION.



# archexteriors

2016



Have you ever wanted to make professional exterior renderings? Do you know how to use V-RaySun, V-RaySky and V-RayPhysicalCamera? Have you ever had problems with composition? Archexteriors will end all your problems. Take a look at this 10 fully textured scenes with professional shaders and lighting ready to render. Get your own portfolio and join cg market.



scene 02 cam 02 post production



# archexteriors

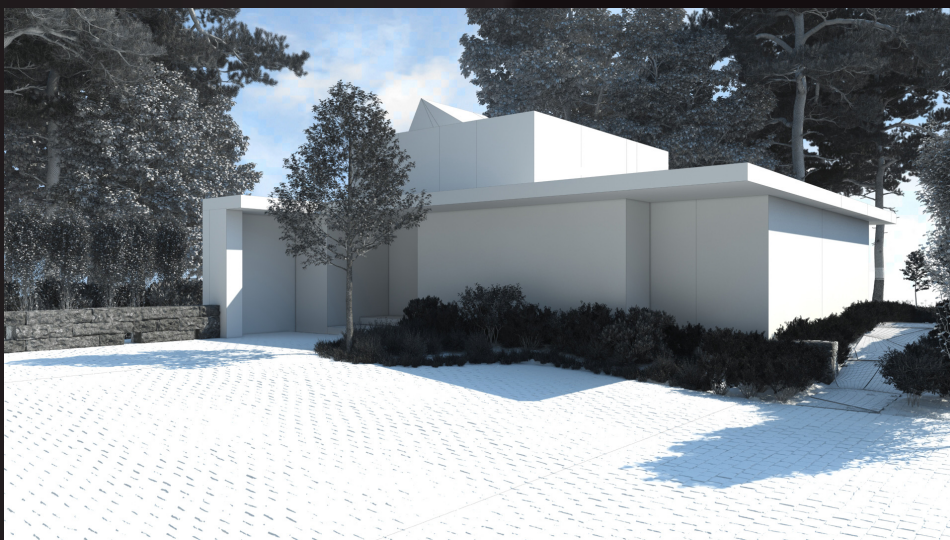
2016



Have you ever wanted to make professional exterior renderings? Do you know how to use V-RaySun, V-RaySky and V-RayPhysicalCamera? Have you ever had problems with composition? Archexteriors will end all your problems. Take a look at this 10 fully textured scenes with professional shaders and lighting ready to render. Get your own portfolio and join cg market.



scene 02 cam 02 raw



scene 02 cam 02 wire

Software and models © 2016 EVERMOTION. EVERMOTION logo is trademark or registered trademark of Evermotion Inc. in the U.S. and/or other countries. All rights reserved. All \*.max and bitmaps models included on this collection with data are an integral part of „archexteriors vol.30” and the resale of this data is strictly prohibited. All models can be used for commercial purposes only by owners who bought this collection. The sharing of collection is strictly prohibited unless that user has written authorization from EVERMOTION.



# archexteriors

2016



Have you ever wanted to make professional exterior renderings? Do you know how to use V-RaySun, V-RaySky and V-RayPhysicalCamera? Have you ever had problems with composition? Archexteriors will end all your problems. Take a look at this 10 fully textured scenes with professional shaders and lighting ready to render. Get your own portfolio and join cg market.



scene 02 cam 03 post production

Software and models © 2016 EVERMOTION. EVERMOTION logo is trademark or registered trademark of Evermotion Inc. in the U.S. and/or other countries. All rights reserved. All \*.max and bitmaps models included on this collection with data are an integral part of „archexteriors vol.30” and the resale of this data is strictly prohibited. All models can be used for commercial purposes only by owners who bought this collection. The sharing of collection is strictly prohibited unless that user has written authorization from EVERMOTION.



# archexteriors

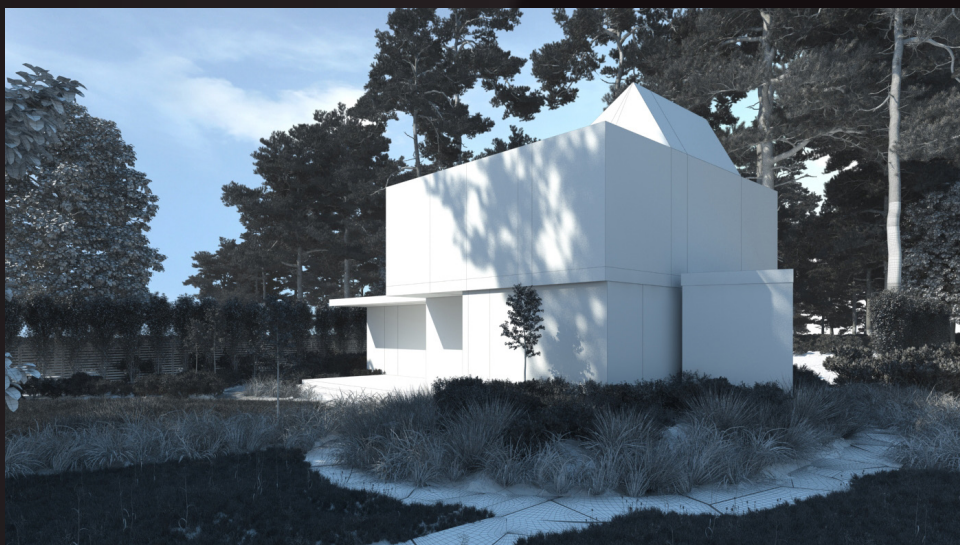
2016



Have you ever wanted to make professional exterior renderings? Do you know how to use V-RaySun, V-RaySky and V-RayPhysicalCamera? Have you ever had problems with composition? Archexteriors will end all your problems. Take a look at this 10 fully textured scenes with professional shaders and lighting ready to render. Get your own portfolio and join cg market.



scene 02 cam 03 raw



scene 02 cam 03 wire

Software and models © 2016 EVERMOTION. EVERMOTION logo is trademark or registered trademark of Evermotion Inc. in the U.S. and/or other countries. All rights reserved. All \*.max and bitmaps models included on this collection with data are an integral part of „archexteriors vol.30” and the resale of this data is strictly prohibited. All models can be used for commercial purposes only by owners who bought this collection. The sharing of collection is strictly prohibited unless that user has written authorization from EVERMOTION.



# archexteriors

2016



Have you ever wanted to make professional exterior renderings? Do you know how to use V-RaySun, V-RaySky and V-RayPhysicalCamera? Have you ever had problems with composition? Archexteriors will end all your problems. Take a look at this 10 fully textured scenes with professional shaders and lighting ready to render. Get your own portfolio and join cg market.



scene 03 cam 01 post production



# archexteriors

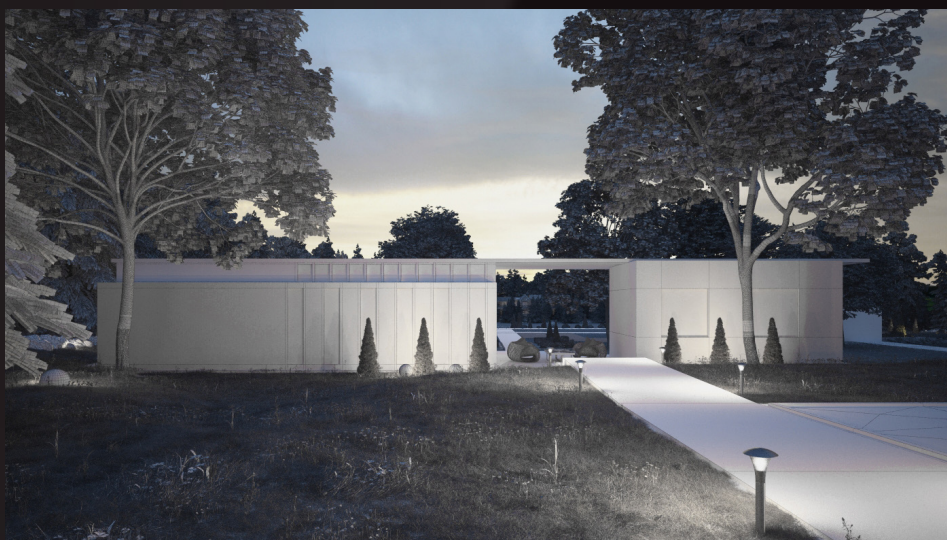
2016



Have you ever wanted to make professional exterior renderings? Do you know how to use V-RaySun, V-RaySky and V-RayPhysicalCamera? Have you ever had problems with composition? Archexteriors will end all your problems. Take a look at this 10 fully textured scenes with professional shaders and lighting ready to render. Get your own portfolio and join cg market.



scene 03 cam 01 raw



scene 03 cam 01 wire

Software and models © 2016 EVERMOTION. EVERMOTION logo is trademark or registered trademark of Evermotion Inc. in the U.S. and/or other countries. All rights reserved. All \*.max and bitmaps models included on this collection with data are an integral part of „archexteriors vol.30” and the resale of this data is strictly prohibited. All models can be used for commercial purposes only by owners who bought this collection. The sharing of collection is strictly prohibited unless that user has written authorization from EVERMOTION.



# archexteriors

2016



Have you ever wanted to make professional exterior renderings? Do you know how to use V-RaySun, V-RaySky and V-RayPhysicalCamera? Have you ever had problems with composition? Archexteriors will end all your problems. Take a look at this 10 fully textured scenes with professional shaders and lighting ready to render. Get your own portfolio and join cg market.



scene 03 cam 02 post production



# archexteriors

2016



Have you ever wanted to make professional exterior renderings? Do you know how to use V-RaySun, V-RaySky and V-RayPhysicalCamera? Have you ever had problems with composition? Archexteriors will end all your problems. Take a look at this 10 fully textured scenes with professional shaders and lighting ready to render. Get your own portfolio and join cg market.



scene 03 cam 02 raw



scene 03 cam 02 wire

Software and models © 2016 EVERMOTION. EVERMOTION logo is trademark or registered trademark of Evermotion Inc. in the U.S. and/or other countries. All rights reserved. All \*.max and bitmaps models included on this collection with data are an integral part of „archexteriors vol.30” and the resale of this data is strictly prohibited. All models can be used for commercial purposes only by owners who bought this collection. The sharing of collection is strictly prohibited unless that user has written authorization from EVERMOTION.



# archexteriors

2016



Have you ever wanted to make professional exterior renderings? Do you know how to use V-RaySun, V-RaySky and V-RayPhysicalCamera? Have you ever had problems with composition? Archexteriors will end all your problems. Take a look at this 10 fully textured scenes with professional shaders and lighting ready to render. Get your own portfolio and join cg market.



scene 03 cam 03 post production



# archexteriors

2016



Have you ever wanted to make professional exterior renderings? Do you know how to use V-RaySun, V-RaySky and V-RayPhysicalCamera? Have you ever had problems with composition? Archexteriors will end all your problems. Take a look at this 10 fully textured scenes with professional shaders and lighting ready to render. Get your own portfolio and join cg market.



scene 03 cam 03 raw



scene 03 cam 03 wire

Software and models © 2016 EVERMOTION. EVERMOTION logo is trademark or registered trademark of Evermotion Inc. in the U.S. and/or other countries. All rights reserved. All \*.max and bitmaps models included on this collection with data are an integral part of „archexteriors vol.30” and the resale of this data is strictly prohibited. All models can be used for commercial purposes only by owners who bought this collection. The sharing of collection is strictly prohibited unless that user has written authorization from EVERMOTION.



# archexteriors

2016



Have you ever wanted to make professional exterior renderings? Do you know how to use V-RaySun, V-RaySky and V-RayPhysicalCamera? Have you ever had problems with composition? Archexteriors will end all your problems. Take a look at this 10 fully textured scenes with professional shaders and lighting ready to render. Get your own portfolio and join cg market.



scene 04 cam 01 post production



# archexteriors

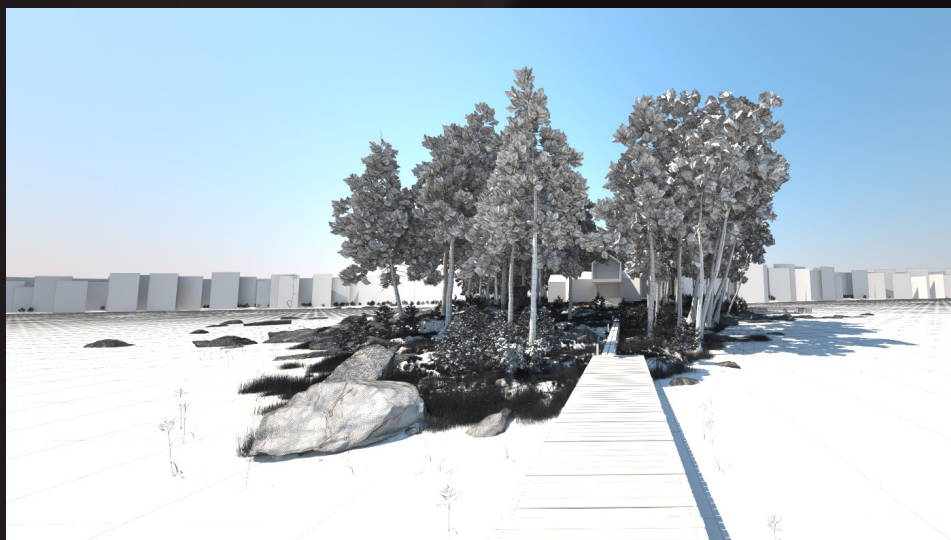
2016



Have you ever wanted to make professional exterior renderings? Do you know how to use V-RaySun, V-RaySky and V-RayPhysicalCamera? Have you ever had problems with composition? Archexteriors will end all your problems. Take a look at this 10 fully textured scenes with professional shaders and lighting ready to render. Get your own portfolio and join cg market.



scene 04 cam 01 raw



scene 04 cam 01 wire

Software and models © 2016 EVERMOTION. EVERMOTION logo is trademark or registered trademark of Evermotion Inc. in the U.S. and/or other countries. All rights reserved. All \*.max and bitmaps models included on this collection with data are an integral part of „archexteriors vol.30” and the resale of this data is strictly prohibited. All models can be used for commercial purposes only by owners who bought this collection. The sharing of collection is strictly prohibited unless that user has written authorization from EVERMOTION.



# archexteriors

2016



Have you ever wanted to make professional exterior renderings? Do you know how to use V-RaySun, V-RaySky and V-RayPhysicalCamera? Have you ever had problems with composition? Archexteriors will end all your problems. Take a look at this 10 fully textured scenes with professional shaders and lighting ready to render. Get your own portfolio and join cg market.



scene 04 cam 02 post production



# archexteriors

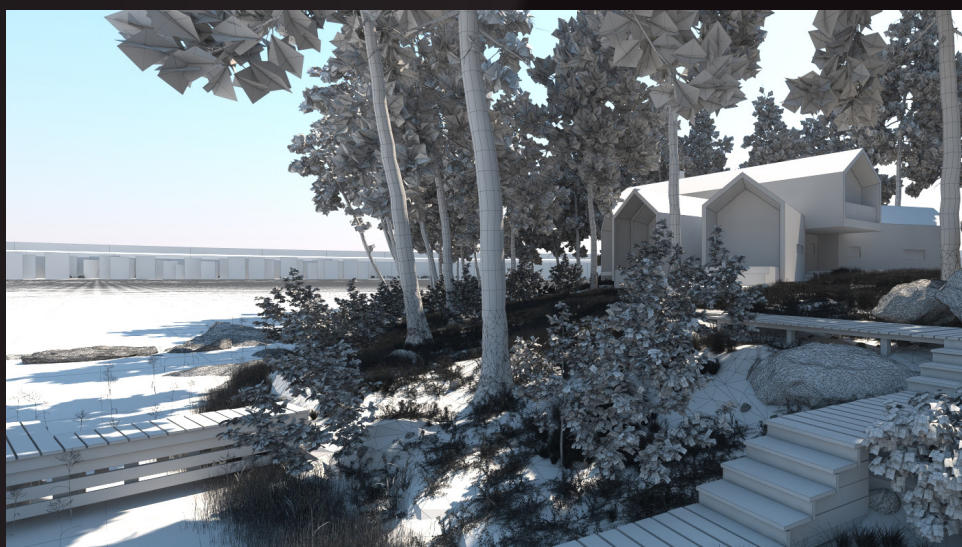
2016



Have you ever wanted to make professional exterior renderings? Do you know how to use V-RaySun, V-RaySky and V-RayPhysicalCamera? Have you ever had problems with composition? Archexteriors will end all your problems. Take a look at this 10 fully textured scenes with professional shaders and lighting ready to render. Get your own portfolio and join cg market.



scene 04 cam 02 raw



scene 04 cam 02 wire

Software and models © 2016 EVERMOTION. EVERMOTION logo is trademark or registered trademark of Evermotion Inc. in the U.S. and/or other countries. All rights reserved. All \*.max and bitmaps models included on this collection with data are an integral part of „archexteriors vol.30” and the resale of this data is strictly prohibited. All models can be used for commercial purposes only by owners who bought this collection. The sharing of collection is strictly prohibited unless that user has written authorization from EVERMOTION.



# archexteriors

2016



Have you ever wanted to make professional exterior renderings? Do you know how to use V-RaySun, V-RaySky and V-RayPhysicalCamera? Have you ever had problems with composition? Archexteriors will end all your problems. Take a look at this 10 fully textured scenes with professional shaders and lighting ready to render. Get your own portfolio and join cg market.



scene 04 cam 03 post production

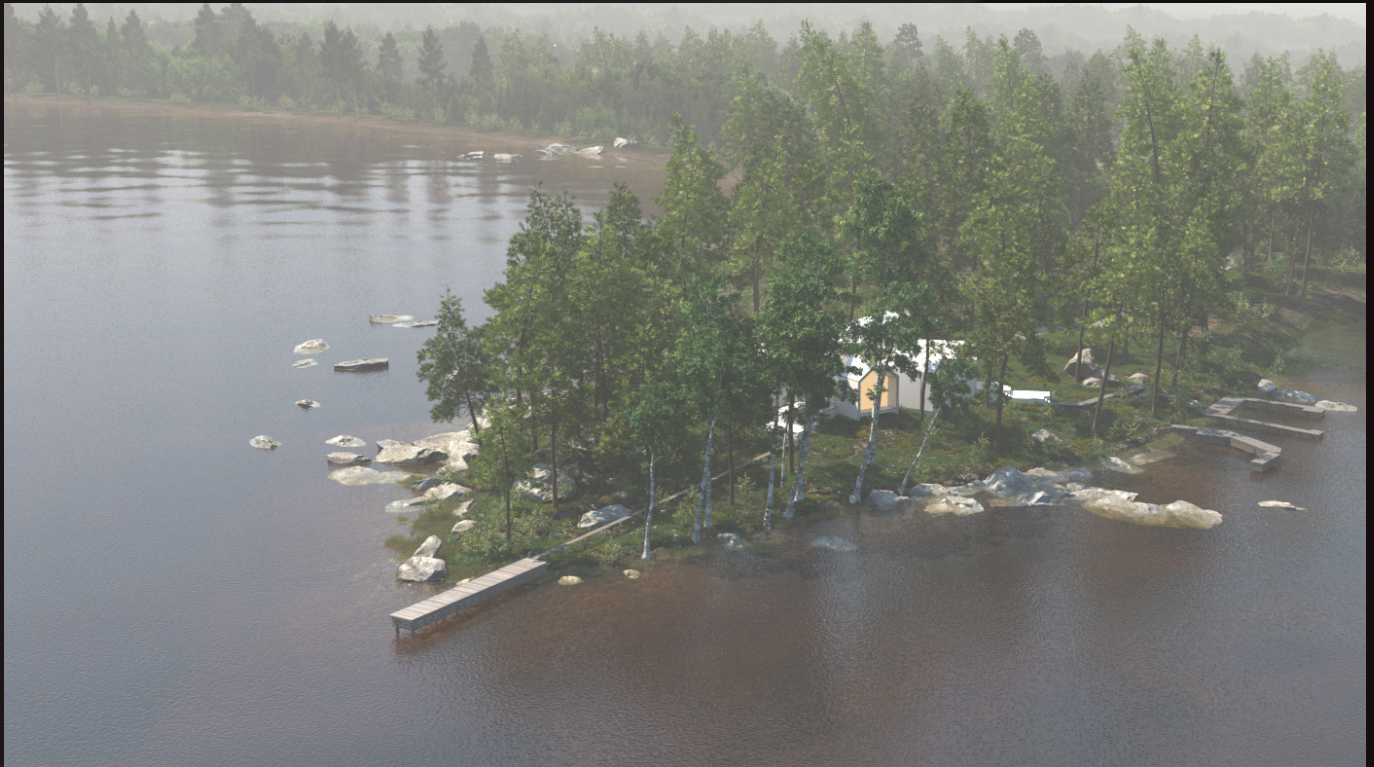


# archexteriors

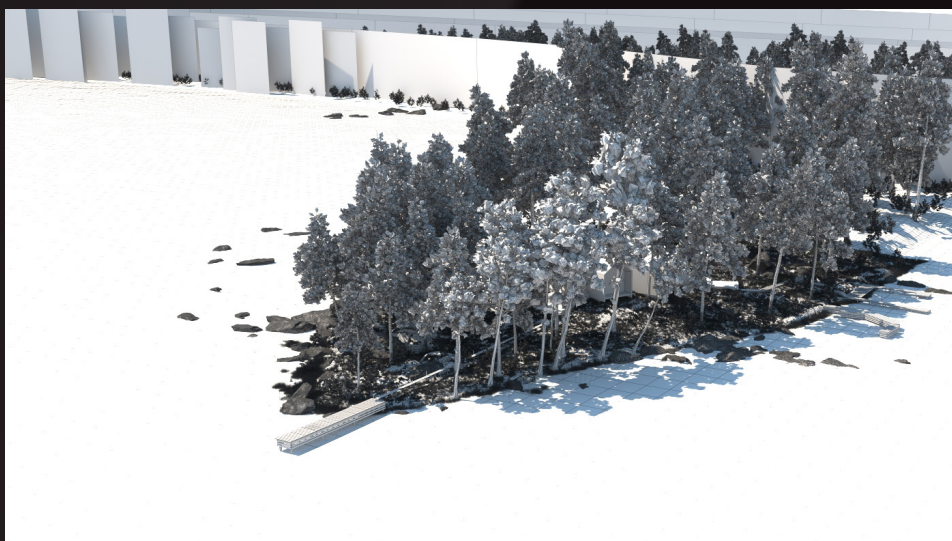
2016



Have you ever wanted to make professional exterior renderings? Do you know how to use V-RaySun, V-RaySky and V-RayPhysicalCamera? Have you ever had problems with composition? Archexteriors will end all your problems. Take a look at this 10 fully textured scenes with professional shaders and lighting ready to render. Get your own portfolio and join cg market.



scene 04 cam 03 raw



scene 04 cam 03 wire

Software and models © 2016 EVERMOTION. EVERMOTION logo is trademark or registered trademark of Evermotion Inc. in the U.S. and/or other countries. All rights reserved. All \*.max and bitmaps models included on this collection with data are an integral part of „archexteriors vol.30” and the resale of this data is strictly prohibited. All models can be used for commercial purposes only by owners who bought this collection. The sharing of collection is strictly prohibited unless that user has written authorization from EVERMOTION.



# archexteriors

2016



Have you ever wanted to make professional exterior renderings? Do you know how to use V-RaySun, V-RaySky and V-RayPhysicalCamera? Have you ever had problems with composition? Archexteriors will end all your problems. Take a look at this 10 fully textured scenes with professional shaders and lighting ready to render. Get your own portfolio and join cg market.



scene 05 cam 01 post production



# archexteriors

2016



Have you ever wanted to make professional exterior renderings? Do you know how to use V-RaySun, V-RaySky and V-RayPhysicalCamera? Have you ever had problems with composition? Archexteriors will end all your problems. Take a look at this 10 fully textured scenes with professional shaders and lighting ready to render. Get your own portfolio and join cg market.



scene 05 cam 01 raw



scene 05 cam 01 wire

Software and models © 2016 EVERMOTION. EVERMOTION logo is trademark or registered trademark of Evermotion Inc. in the U.S. and/or other countries. All rights reserved. All \*.max and bitmaps models included on this collection with data are an integral part of „archexteriors vol.30” and the resale of this data is strictly prohibited. All models can be used for commercial purposes only by owners who bought this collection. The sharing of collection is strictly prohibited unless that user has written authorization from EVERMOTION.



# archexteriors

2016



Have you ever wanted to make professional exterior renderings? Do you know how to use V-RaySun, V-RaySky and V-RayPhysicalCamera? Have you ever had problems with composition? Archexteriors will end all your problems. Take a look at this 10 fully textured scenes with professional shaders and lighting ready to render. Get your own portfolio and join cg market.



scene 05 cam 02 post production



# archexteriors

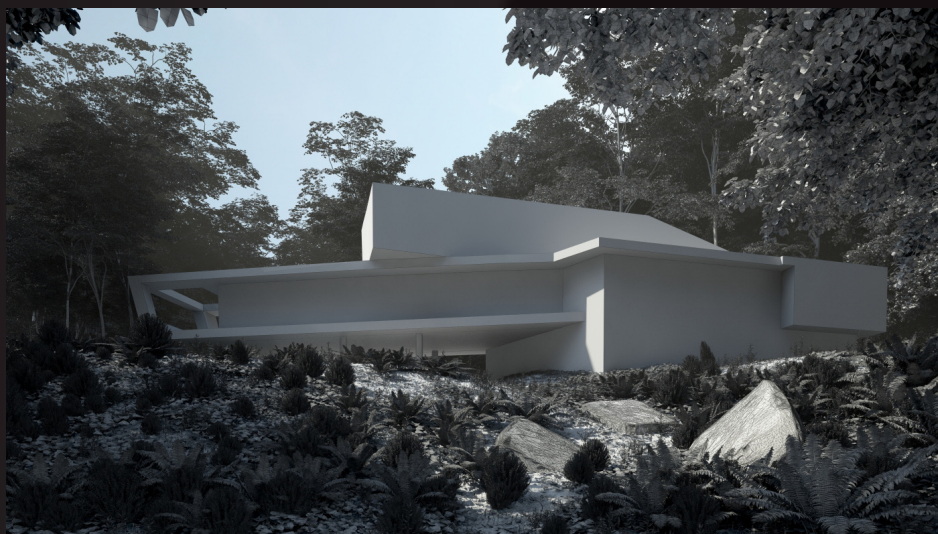
2016



Have you ever wanted to make professional exterior renderings? Do you know how to use V-RaySun, V-RaySky and V-RayPhysicalCamera? Have you ever had problems with composition? Archexteriors will end all your problems. Take a look at this 10 fully textured scenes with professional shaders and lighting ready to render. Get your own portfolio and join cg market.



scene 05 cam 02 raw



scene 05 cam 02 wire

Software and models © 2016 EVERMOTION. EVERMOTION logo is trademark or registered trademark of Evermotion Inc. in the U.S. and/or other countries. All rights reserved. All \*.max and bitmaps models included on this collection with data are an integral part of „archexteriors vol.30” and the resale of this data is strictly prohibited. All models can be used for commercial purposes only by owners who bought this collection. The sharing of collection is strictly prohibited unless that user has written authorization from EVERMOTION.

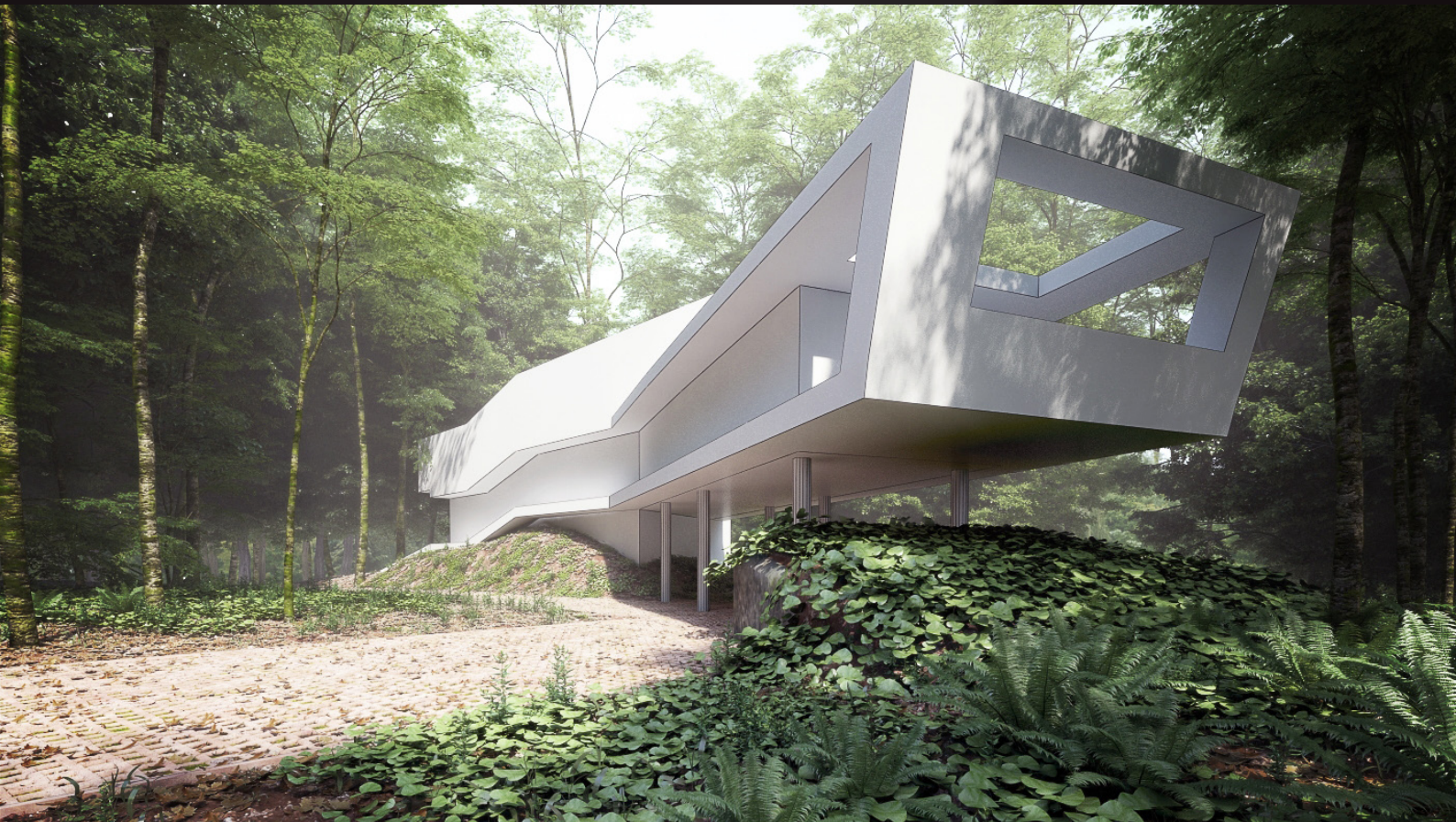


# archexteriors

2016



Have you ever wanted to make professional exterior renderings? Do you know how to use V-RaySun, V-RaySky and V-RayPhysicalCamera? Have you ever had problems with composition? Archexteriors will end all your problems. Take a look at this 10 fully textured scenes with professional shaders and lighting ready to render. Get your own portfolio and join cg market.



scene 05 cam 03 post production



# archexteriors

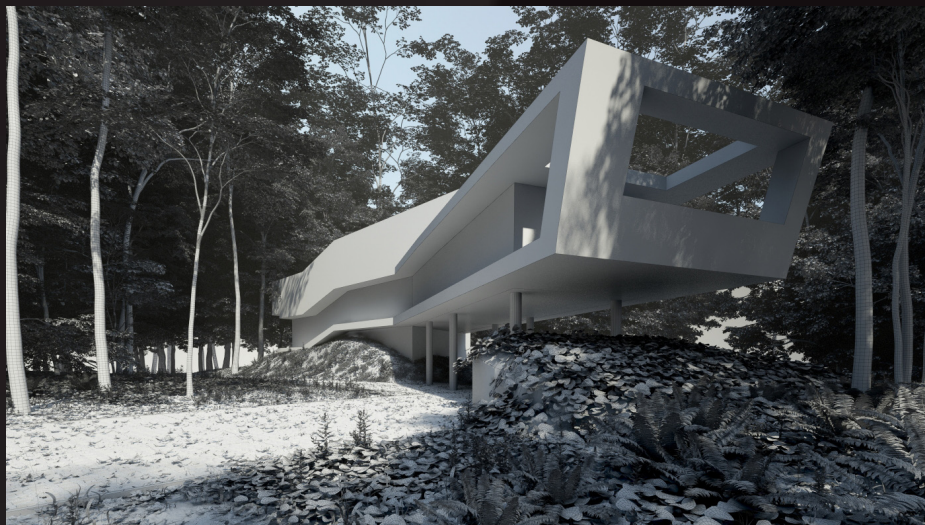
2016



Have you ever wanted to make professional exterior renderings? Do you know how to use V-RaySun, V-RaySky and V-RayPhysicalCamera? Have you ever had problems with composition? Archexteriors will end all your problems. Take a look at this 10 fully textured scenes with professional shaders and lighting ready to render. Get your own portfolio and join cg market.



scene 05 cam 03 raw



scene 05 cam 03 wire

Software and models © 2016 EVERMOTION. EVERMOTION logo is trademark or registered trademark of Evermotion Inc. in the U.S. and/or other countries. All rights reserved. All \*.max and bitmaps models included on this collection with data are an integral part of „archexteriors vol.30” and the resale of this data is strictly prohibited. All models can be used for commercial purposes only by owners who bought this collection. The sharing of collection is strictly prohibited unless that user has written authorization from EVERMOTION.



# archexteriors

2016



Have you ever wanted to make professional exterior renderings? Do you know how to use V-RaySun, V-RaySky and V-RayPhysicalCamera? Have you ever had problems with composition? Archexteriors will end all your problems. Take a look at this 10 fully textured scenes with professional shaders and lighting ready to render. Get your own portfolio and join cg market.



scene 06 cam 01 post production

Software and models © 2016 EVERMOTION. EVERMOTION logo is trademark or registered trademark of Evermotion Inc. in the U.S. and/or other countries. All rights reserved. All \*.max and bitmaps models included on this collection with data are an integral part of „archexteriors vol.30” and the resale of this data is strictly prohibited. All models can be used for commercial purposes only by owners who bought this collection. The sharing of collection is strictly prohibited unless that user has written authorization from EVERMOTION.



# archexteriors

2016



Have you ever wanted to make professional exterior renderings? Do you know how to use V-RaySun, V-RaySky and V-RayPhysicalCamera? Have you ever had problems with composition? Archexteriors will end all your problems. Take a look at this 10 fully textured scenes with professional shaders and lighting ready to render. Get your own portfolio and join cg market.



scene 06 cam 01 raw



scene 06 cam 01 wire

Software and models © 2016 EVERMOTION. EVERMOTION logo is trademark or registered trademark of Evermotion Inc. in the U.S. and/or other countries. All rights reserved. All \*.max and bitmaps models included on this collection with data are an integral part of „archexteriors vol.30” and the resale of this data is strictly prohibited. All models can be used for commercial purposes only by owners who bought this collection. The sharing of collection is strictly prohibited unless that user has written authorization from EVERMOTION.



# archexteriors

2016



Have you ever wanted to make professional exterior renderings? Do you know how to use V-RaySun, V-RaySky and V-RayPhysicalCamera? Have you ever had problems with composition? Archexteriors will end all your problems. Take a look at this 10 fully textured scenes with professional shaders and lighting ready to render. Get your own portfolio and join cg market.



scene 06 cam 02 post production



# archexteriors

2016



Have you ever wanted to make professional exterior renderings? Do you know how to use V-RaySun, V-RaySky and V-RayPhysicalCamera? Have you ever had problems with composition? Archexteriors will end all your problems. Take a look at this 10 fully textured scenes with professional shaders and lighting ready to render. Get your own portfolio and join cg market.



scene 06 cam 02 raw



scene 06 cam 02 wire

Software and models © 2016 EVERMOTION. EVERMOTION logo is trademark or registered trademark of Evermotion Inc. in the U.S. and/or other countries. All rights reserved. All \*.max and bitmaps models included on this collection with data are an integral part of „archexteriors vol.30” and the resale of this data is strictly prohibited. All models can be used for commercial purposes only by owners who bought this collection. The sharing of collection is strictly prohibited unless that user has written authorization from EVERMOTION.



# archexteriors

2016



Have you ever wanted to make professional exterior renderings? Do you know how to use V-RaySun, V-RaySky and V-RayPhysicalCamera? Have you ever had problems with composition? Archexteriors will end all your problems. Take a look at this 10 fully textured scenes with professional shaders and lighting ready to render. Get your own portfolio and join cg market.



scene 06 cam 03 post production

Software and models © 2016 EVERMOTION. EVERMOTION logo is trademark or registered trademark of Evermotion Inc. in the U.S. and/or other countries. All rights reserved. All \*.max and bitmaps models included on this collection with data are an integral part of „archexteriors vol.30” and the resale of this data is strictly prohibited. All models can be used for commercial purposes only by owners who bought this collection. The sharing of collection is strictly prohibited unless that user has written authorization from EVERMOTION.



# archexteriors

2016



Have you ever wanted to make professional exterior renderings? Do you know how to use V-RaySun, V-RaySky and V-RayPhysicalCamera? Have you ever had problems with composition? Archexteriors will end all your problems. Take a look at this 10 fully textured scenes with professional shaders and lighting ready to render. Get your own portfolio and join cg market.



scene 06 cam 03 raw



scene 06 cam 03 wire

Software and models © 2016 EVERMOTION. EVERMOTION logo is trademark or registered trademark of Evermotion Inc. in the U.S. and/or other countries. All rights reserved. All \*.max and bitmaps models included on this collection with data are an integral part of „archexteriors vol.30” and the resale of this data is strictly prohibited. All models can be used for commercial purposes only by owners who bought this collection. The sharing of collection is strictly prohibited unless that user has written authorization from EVERMOTION.



# archexteriors

2016



Have you ever wanted to make professional exterior renderings? Do you know how to use V-RaySun, V-RaySky and V-RayPhysicalCamera? Have you ever had problems with composition? Archexteriors will end all your problems. Take a look at this 10 fully textured scenes with professional shaders and lighting ready to render. Get your own portfolio and join cg market.



scene 07 cam 01 post production

Software and models © 2016 EVERMOTION. EVERMOTION logo is trademark or registered trademark of Evermotion Inc. in the U.S. and/or other countries. All rights reserved. All \*.max and bitmaps models included on this collection with data are an integral part of „archexteriors vol.30” and the resale of this data is strictly prohibited. All models can be used for commercial purposes only by owners who bought this collection. The sharing of collection is strictly prohibited unless that user has written authorization from EVERMOTION.



# archexteriors

2016



Have you ever wanted to make professional exterior renderings? Do you know how to use V-RaySun, V-RaySky and V-RayPhysicalCamera? Have you ever had problems with composition? Archexteriors will end all your problems. Take a look at this 10 fully textured scenes with professional shaders and lighting ready to render. Get your own portfolio and join cg market.



scene 07 cam 01 raw



scene 07 cam 01 wire

Software and models © 2016 EVERMOTION. EVERMOTION logo is trademark or registered trademark of Evermotion Inc. in the U.S. and/or other countries. All rights reserved. All \*.max and bitmaps models included on this collection with data are an integral part of „archexteriors vol.30” and the resale of this data is strictly prohibited. All models can be used for commercial purposes only by owners who bought this collection. The sharing of collection is strictly prohibited unless that user has written authorization from EVERMOTION.



# archexteriors

2016



Have you ever wanted to make professional exterior renderings? Do you know how to use V-RaySun, V-RaySky and V-RayPhysicalCamera? Have you ever had problems with composition? Archexteriors will end all your problems. Take a look at this 10 fully textured scenes with professional shaders and lighting ready to render. Get your own portfolio and join cg market.



scene 07 cam 02 post production

Software and models © 2016 EVERMOTION. EVERMOTION logo is trademark or registered trademark of Evermotion Inc. in the U.S. and/or other countries. All rights reserved. All \*.max and bitmaps models included on this collection with data are an integral part of „archexteriors vol.30” and the resale of this data is strictly prohibited. All models can be used for commercial purposes only by owners who bought this collection. The sharing of collection is strictly prohibited unless that user has written authorization from EVERMOTION.



# archexteriors

2016



Have you ever wanted to make professional exterior renderings? Do you know how to use V-RaySun, V-RaySky and V-RayPhysicalCamera? Have you ever had problems with composition? Archexteriors will end all your problems. Take a look at this 10 fully textured scenes with professional shaders and lighting ready to render. Get your own portfolio and join cg market.



scene 07 cam 02 raw



scene 07 cam 02 wire

Software and models © 2016 EVERMOTION. EVERMOTION logo is trademark or registered trademark of Evermotion Inc. in the U.S. and/or other countries. All rights reserved. All \*.max and bitmaps models included on this collection with data are an integral part of „archexteriors vol.30” and the resale of this data is strictly prohibited. All models can be used for commercial purposes only by owners who bought this collection. The sharing of collection is strictly prohibited unless that user has written authorization from EVERMOTION.



# archexteriors

2016



Have you ever wanted to make professional exterior renderings? Do you know how to use V-RaySun, V-RaySky and V-RayPhysicalCamera? Have you ever had problems with composition? Archexteriors will end all your problems. Take a look at this 10 fully textured scenes with professional shaders and lighting ready to render. Get your own portfolio and join cg market.



scene 07 cam 03 post production

Software and models © 2016 EVERMOTION. EVERMOTION logo is trademark or registered trademark of Evermotion Inc. in the U.S. and/or other countries. All rights reserved. All \*.max and bitmaps models included on this collection with data are an integral part of „archexteriors vol.30” and the resale of this data is strictly prohibited. All models can be used for commercial purposes only by owners who bought this collection. The sharing of collection is strictly prohibited unless that user has written authorization from EVERMOTION.



# archexteriors

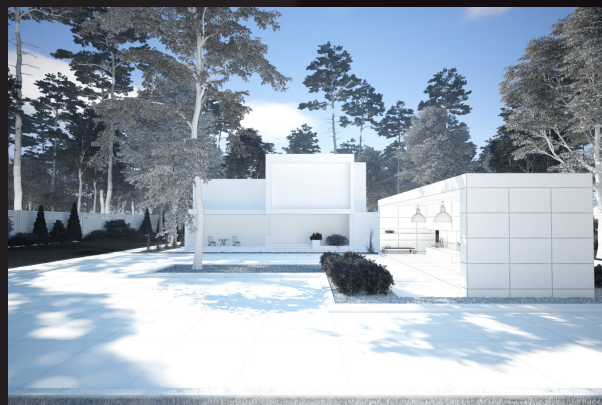
2016



Have you ever wanted to make professional exterior renderings? Do you know how to use V-RaySun, V-RaySky and V-RayPhysicalCamera? Have you ever had problems with composition? Archexteriors will end all your problems. Take a look at this 10 fully textured scenes with professional shaders and lighting ready to render. Get your own portfolio and join cg market.



scene 07 cam 03 raw



scene 07 cam 03 wire

Software and models © 2016 EVERMOTION. EVERMOTION logo is trademark or registered trademark of Evermotion Inc. in the U.S. and/or other countries. All rights reserved. All \*.max and bitmaps models included on this collection with data are an integral part of „archexteriors vol.30” and the resale of this data is strictly prohibited. All models can be used for commercial purposes only by owners who bought this collection. The sharing of collection is strictly prohibited unless that user has written authorization from EVERMOTION.



# archexteriors

2016



Have you ever wanted to make professional exterior renderings? Do you know how to use V-RaySun, V-RaySky and V-RayPhysicalCamera? Have you ever had problems with composition? Archexteriors will end all your problems. Take a look at this 10 fully textured scenes with professional shaders and lighting ready to render. Get your own portfolio and join cg market.



scene 08 cam 01 post production

Software and models © 2016 EVERMOTION. EVERMOTION logo is trademark or registered trademark of Evermotion Inc. in the U.S. and/or other countries. All rights reserved. All \*.max and bitmaps models included on this collection with data are an integral part of „archexteriors vol.30” and the resale of this data is strictly prohibited. All models can be used for commercial purposes only by owners who bought this collection. The sharing of collection is strictly prohibited unless that user has written authorization from EVERMOTION.



# archexteriors

2016



Have you ever wanted to make professional exterior renderings? Do you know how to use V-RaySun, V-RaySky and V-RayPhysicalCamera? Have you ever had problems with composition? Archexteriors will end all your problems. Take a look at this 10 fully textured scenes with professional shaders and lighting ready to render. Get your own portfolio and join cg market.



scene 08 cam 01 raw



scene 08 cam 01 wire

Software and models © 2016 EVERMOTION. EVERMOTION logo is trademark or registered trademark of Evermotion Inc. in the U.S. and/or other countries. All rights reserved. All \*.max and bitmaps models included on this collection with data are an integral part of „archexteriors vol.30” and the resale of this data is strictly prohibited. All models can be used for commercial purposes only by owners who bought this collection. The sharing of collection is strictly prohibited unless that user has written authorization from EVERMOTION.



# archexteriors

2016



Have you ever wanted to make professional exterior renderings? Do you know how to use V-RaySun, V-RaySky and V-RayPhysicalCamera? Have you ever had problems with composition? Archexteriors will end all your problems. Take a look at this 10 fully textured scenes with professional shaders and lighting ready to render. Get your own portfolio and join cg market.



scene 08 cam 02 post production

Software and models © 2016 EVERMOTION. EVERMOTION logo is trademark or registered trademark of Evermotion Inc. in the U.S. and/or other countries. All rights reserved. All \*.max and bitmaps models included on this collection with data are an integral part of „archexteriors vol.30” and the resale of this data is strictly prohibited. All models can be used for commercial purposes only by owners who bought this collection. The sharing of collection is strictly prohibited unless that user has written authorization from EVERMOTION.



# archexteriors

2016



Have you ever wanted to make professional exterior renderings? Do you know how to use V-RaySun, V-RaySky and V-RayPhysicalCamera? Have you ever had problems with composition? Archexteriors will end all your problems. Take a look at this 10 fully textured scenes with professional shaders and lighting ready to render. Get your own portfolio and join cg market.



scene 08 cam 02 raw



scene 08 cam 02 wire

Software and models © 2016 EVERMOTION. EVERMOTION logo is trademark or registered trademark of Evermotion Inc. in the U.S. and/or other countries. All rights reserved. All \*.max and bitmaps models included on this collection with data are an integral part of „archexteriors vol.30” and the resale of this data is strictly prohibited. All models can be used for commercial purposes only by owners who bought this collection. The sharing of collection is strictly prohibited unless that user has written authorization from EVERMOTION.



# archexteriors

2016



Have you ever wanted to make professional exterior renderings? Do you know how to use V-RaySun, V-RaySky and V-RayPhysicalCamera? Have you ever had problems with composition? Archexteriors will end all your problems. Take a look at this 10 fully textured scenes with professional shaders and lighting ready to render. Get your own portfolio and join cg market.



scene 08 cam 03 post production

Software and models © 2016 EVERMOTION. EVERMOTION logo is trademark or registered trademark of Evermotion Inc. in the U.S. and/or other countries. All rights reserved. All \*.max and bitmaps models included on this collection with data are an integral part of „archexteriors vol.30” and the resale of this data is strictly prohibited. All models can be used for commercial purposes only by owners who bought this collection. The sharing of collection is strictly prohibited unless that user has written authorization from EVERMOTION.



# archexteriors

2016



Have you ever wanted to make professional exterior renderings? Do you know how to use V-RaySun, V-RaySky and V-RayPhysicalCamera? Have you ever had problems with composition? Archexteriors will end all your problems. Take a look at this 10 fully textured scenes with professional shaders and lighting ready to render. Get your own portfolio and join cg market.



scene 08 cam 03 raw



scene 08 cam 03 wire

Software and models © 2016 EVERMOTION. EVERMOTION logo is trademark or registered trademark of Evermotion Inc. in the U.S. and/or other countries. All rights reserved. All \*.max and bitmaps models included on this collection with data are an integral part of „archexteriors vol.30” and the resale of this data is strictly prohibited. All models can be used for commercial purposes only by owners who bought this collection. The sharing of collection is strictly prohibited unless that user has written authorization from EVERMOTION.



# archexteriors

2016



Have you ever wanted to make professional exterior renderings? Do you know how to use V-RaySun, V-RaySky and V-RayPhysicalCamera? Have you ever had problems with composition? Archexteriors will end all your problems. Take a look at this 10 fully textured scenes with professional shaders and lighting ready to render. Get your own portfolio and join cg market.



scene 09 cam 01 post production



# archexteriors

2016



Have you ever wanted to make professional exterior renderings? Do you know how to use V-RaySun, V-RaySky and V-RayPhysicalCamera? Have you ever had problems with composition? Archexteriors will end all your problems. Take a look at this 10 fully textured scenes with professional shaders and lighting ready to render. Get your own portfolio and join cg market.



scene 09 cam 01 raw



scene 09 cam 01 wire

Software and models © 2016 EVERMOTION. EVERMOTION logo is trademark or registered trademark of Evermotion Inc. in the U.S. and/or other countries. All rights reserved. All \*.max and bitmaps models included on this collection with data are an integral part of „archexteriors vol.30” and the resale of this data is strictly prohibited. All models can be used for commercial purposes only by owners who bought this collection. The sharing of collection is strictly prohibited unless that user has written authorization from EVERMOTION.



# archexteriors

2016



Have you ever wanted to make professional exterior renderings? Do you know how to use V-RaySun, V-RaySky and V-RayPhysicalCamera? Have you ever had problems with composition? Archexteriors will end all your problems. Take a look at this 10 fully textured scenes with professional shaders and lighting ready to render. Get your own portfolio and join cg market.



scene 09 cam 02 post production

Software and models © 2016 EVERMOTION. EVERMOTION logo is trademark or registered trademark of Evermotion Inc. in the U.S. and/or other countries. All rights reserved. All \*.max and bitmaps models included on this collection with data are an integral part of „archexteriors vol.30” and the resale of this data is strictly prohibited. All models can be used for commercial purposes only by owners who bought this collection. The sharing of collection is strictly prohibited unless that user has written authorization from EVERMOTION.



# archexteriors

2016



Have you ever wanted to make professional exterior renderings? Do you know how to use V-RaySun, V-RaySky and V-RayPhysicalCamera? Have you ever had problems with composition? Archexteriors will end all your problems. Take a look at this 10 fully textured scenes with professional shaders and lighting ready to render. Get your own portfolio and join cg market.



scene 09 cam 02 raw



scene 09 cam 02 wire

Software and models © 2016 EVERMOTION. EVERMOTION logo is trademark or registered trademark of Evermotion Inc. in the U.S. and/or other countries. All rights reserved. All \*.max and bitmaps models included on this collection with data are an integral part of „archexteriors vol.30” and the resale of this data is strictly prohibited. All models can be used for commercial purposes only by owners who bought this collection. The sharing of collection is strictly prohibited unless that user has written authorization from EVERMOTION.



# archexteriors

2016



Have you ever wanted to make professional exterior renderings? Do you know how to use V-RaySun, V-RaySky and V-RayPhysicalCamera? Have you ever had problems with composition? Archexteriors will end all your problems. Take a look at this 10 fully textured scenes with professional shaders and lighting ready to render. Get your own portfolio and join cg market.



scene 09 cam 03 post production



# archexteriors

2016



Have you ever wanted to make professional exterior renderings? Do you know how to use V-RaySun, V-RaySky and V-RayPhysicalCamera? Have you ever had problems with composition? Archexteriors will end all your problems. Take a look at this 10 fully textured scenes with professional shaders and lighting ready to render. Get your own portfolio and join cg market.



scene 09 cam 03 raw



scene 09 cam 03 wire

Software and models © 2016 EVERMOTION. EVERMOTION logo is trademark or registered trademark of Evermotion Inc. in the U.S. and/or other countries. All rights reserved. All \*.max and bitmaps models included on this collection with data are an integral part of „archexteriors vol.30” and the resale of this data is strictly prohibited. All models can be used for commercial purposes only by owners who bought this collection. The sharing of collection is strictly prohibited unless that user has written authorization from EVERMOTION.



# archexteriors

2016



Have you ever wanted to make professional exterior renderings? Do you know how to use V-RaySun, V-RaySky and V-RayPhysicalCamera? Have you ever had problems with composition? Archexteriors will end all your problems. Take a look at this 10 fully textured scenes with professional shaders and lighting ready to render. Get your own portfolio and join cg market.



scene 10 cam 01 post production



# archexteriors

2016



Have you ever wanted to make professional exterior renderings? Do you know how to use V-RaySun, V-RaySky and V-RayPhysicalCamera? Have you ever had problems with composition? Archexteriors will end all your problems. Take a look at this 10 fully textured scenes with professional shaders and lighting ready to render. Get your own portfolio and join cg market.



scene 10 cam 01 raw



scene 10 cam 01 wire

Software and models © 2016 EVERMOTION. EVERMOTION logo is trademark or registered trademark of Evermotion Inc. in the U.S. and/or other countries. All rights reserved. All \*.max and bitmaps models included on this collection with data are an integral part of „archexteriors vol.30” and the resale of this data is strictly prohibited. All models can be used for commercial purposes only by owners who bought this collection. The sharing of collection is strictly prohibited unless that user has written authorization from EVERMOTION.



# archexteriors

2016



Have you ever wanted to make professional exterior renderings? Do you know how to use V-RaySun, V-RaySky and V-RayPhysicalCamera? Have you ever had problems with composition? Archexteriors will end all your problems. Take a look at this 10 fully textured scenes with professional shaders and lighting ready to render. Get your own portfolio and join cg market.



scene 10 cam 02 post production



# archexteriors

2016



Have you ever wanted to make professional exterior renderings? Do you know how to use V-RaySun, V-RaySky and V-RayPhysicalCamera? Have you ever had problems with composition? Archexteriors will end all your problems. Take a look at this 10 fully textured scenes with professional shaders and lighting ready to render. Get your own portfolio and join cg market.



scene 10 cam 02 raw



scene 10 cam 02 wire

Software and models © 2016 EVERMOTION. EVERMOTION logo is trademark or registered trademark of Evermotion Inc. in the U.S. and/or other countries. All rights reserved. All \*.max and bitmaps models included on this collection with data are an integral part of „archexteriors vol.30” and the resale of this data is strictly prohibited. All models can be used for commercial purposes only by owners who bought this collection. The sharing of collection is strictly prohibited unless that user has written authorization from EVERMOTION.



# archexteriors

2016



Have you ever wanted to make professional exterior renderings? Do you know how to use V-RaySun, V-RaySky and V-RayPhysicalCamera? Have you ever had problems with composition? Archexteriors will end all your problems. Take a look at this 10 fully textured scenes with professional shaders and lighting ready to render. Get your own portfolio and join cg market.



scene 10 cam 03 post production



# archexteriors

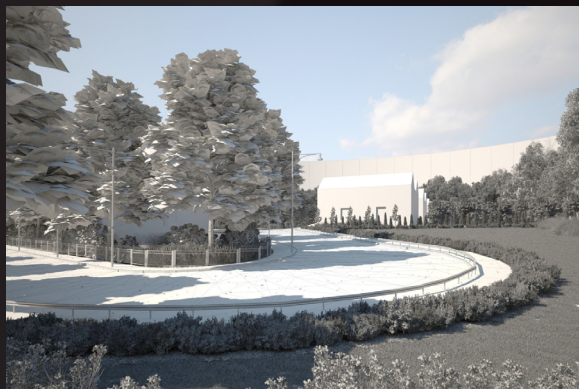
2016



Have you ever wanted to make professional exterior renderings? Do you know how to use V-RaySun, V-RaySky and V-RayPhysicalCamera? Have you ever had problems with composition? Archexteriors will end all your problems. Take a look at this 10 fully textured scenes with professional shaders and lighting ready to render. Get your own portfolio and join cg market.



scene 010 cam 03 raw



scene 10 cam 03 wire

Software and models © 2016 EVERMOTION. EVERMOTION logo is trademark or registered trademark of Evermotion Inc. in the U.S. and/or other countries. All rights reserved. All \*.max and bitmaps models included on this collection with data are an integral part of „archexteriors vol.30” and the resale of this data is strictly prohibited. All models can be used for commercial purposes only by owners who bought this collection. The sharing of collection is strictly prohibited unless that user has written authorization from EVERMOTION.